



WORX RACING INTAKE GRATE

PART # - WR246

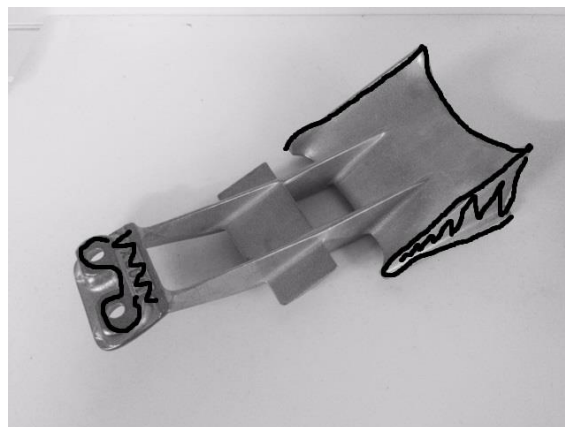
MODELS: YAMAHA VXR 2015+ - YAMAHA GP1800 2017+

IMPORTANT: READ ALL INSTRUCTIONS BEFORE PROCEEDING WITH INSTALLATION

Parts Supplied: 1 x **WR246 WORX Intake Grate**

1. Remove stock intake grate and wipe clean any old silicone.
2. Apply Marine sealant to intake grate (see illustration below)
3. Fit **Worx** Intake Grate into position using the stock mounting bolts. Apply Blue loctite to bolts and torque to 40 Nm.
4. Wipe off excess Marine sealant with a damp cloth. Allow 4-6 hours minimum for sealant to cure before riding.
5. Regularly check that all bolts are tight on your intake grate and ride plate.

It is recommended to use the pump seal kit, Marine Sealant must be used to seal rear of intake grate to pump duct to reduce cavitation.



Thank you for purchasing **Worx Racing components** products. We firmly believe that **Worx Racing Components** products are among the finest watercraft parts available. A great deal of time and effort has gone into the design and development of this product to ensure that it will perform to the highest standard and that installation is a relatively straight forward and simple procedure. If you have any questions or comments on the performance and/or installation of our products please contact us at the numbers listed on page one or through your local **Worx** dealer.

8B 354 Brisbane Rd Arundel QLD 4214 Phone: +61 7 5563 1031

www.worx.com.au / info@worx.com.au
