



WORX RACING SPARK INTAKE GRATE

PART # - WR244

MODELS: SEADOO SPARK

INSTALLATION INSTRUCTIONS

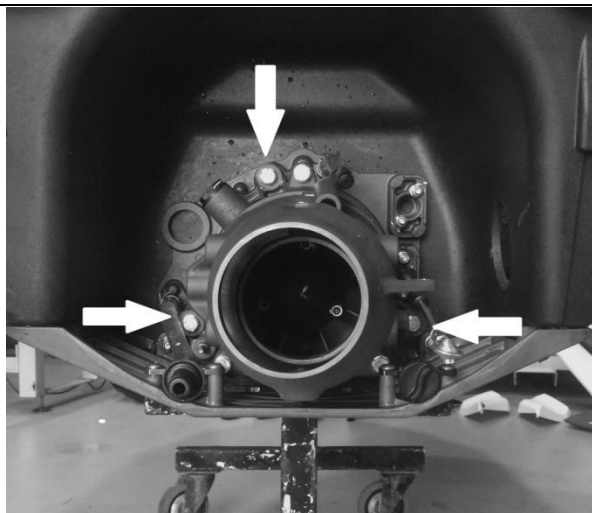
IMPORTANT: READ ALL INSTRUCTIONS BEFORE PROCEEDING WITH INSTALLATION

- 1- Make sure ski is secure and on a flat surface. Remove lanyard and disconnect battery.
- 2- Remove top deck of SEADOO SPARK. (Refer to WORX Spark Deck removal instructions)
- 3- You will need to remove the Jet unit from the ski to access the 2 locating screws for the intake grate. Remove the steering cable bolt from the nozzle using 10mm spanner and socket wrench. Then remove the 3 main pump bolts holding in the pump (#1) with a 13mm socket wrench and extension. Pull pump out.
- 4- Remove 2 x 8mm grub screws locating OEM intake grate (#2).
- 5- Then remove 3 x M8 bolts and nuts from OEM Intake grate (#3/#4). This requires 2 people. Once undone pull grate down and to remove.
- 6- Clean surface and apply Marine silicone sealant around mounting holes (#5) on WORX Racing intake grate.
- 7- Refit into ski using OEM bolts. Again this requires 2 people to fit. Start new M6 x 12 bolts (supplied) into back of grate (#6) to locate it before tightening 3 main bolts. Tighten all bolts.
- 8- Refit jet unit and attach steering cable. Be sure to check proper operation before use
- 9- Allow 24 hours for Marine silicone to dry before use. Regularly check grate and bolts

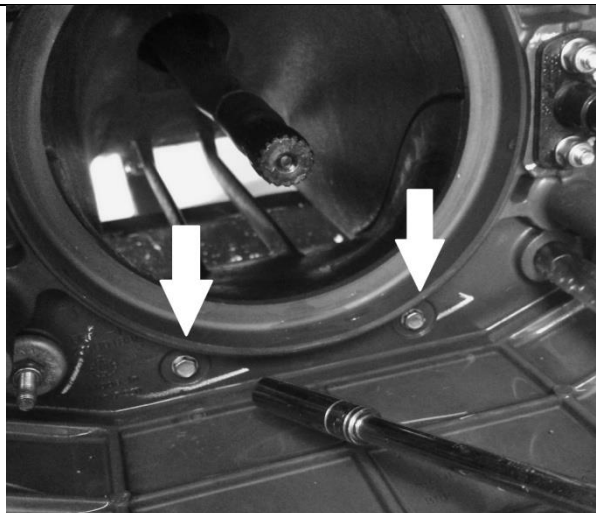
Thank you for purchasing **Worx Racing components** products. We firmly believe that **Worx Racing Components** products are among the finest watercraft parts available. A great deal of time and effort has gone into the design and development of this product to ensure that it will perform to the highest standard and that installation is a relatively straight forward and simple procedure. If you have any questions or comments on the performance and/or installation of our products please contact us at the numbers listed on page one or through your local **Worx** dealer.

8B 354 Brisbane Rd Arundel QLD 4214 Phone: +61 7 5563 1031

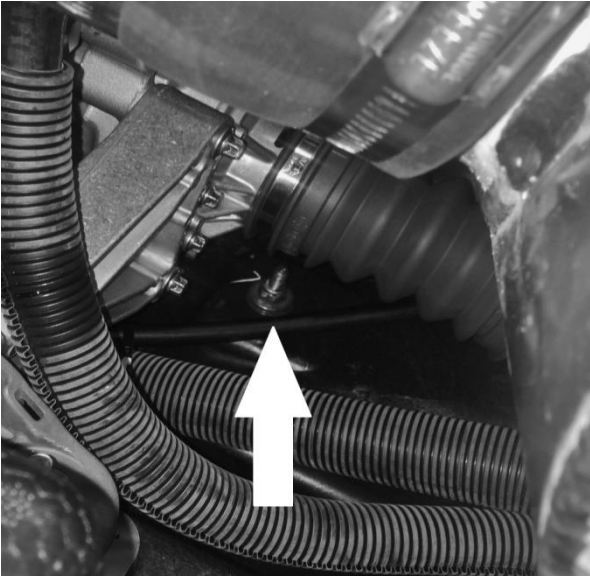
www.worx.com.au / info@worx.com.au



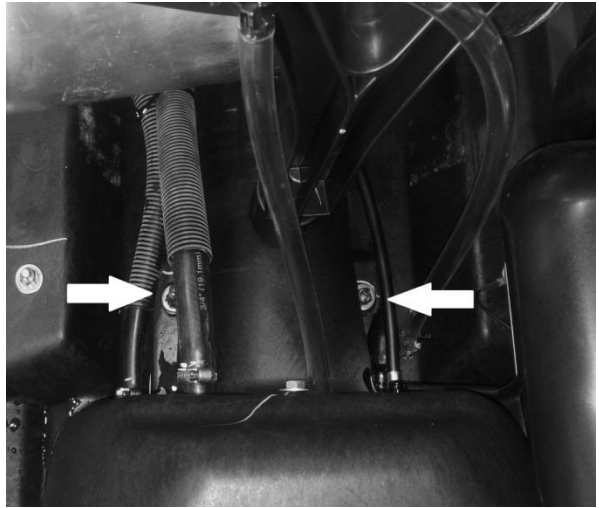
(#1)



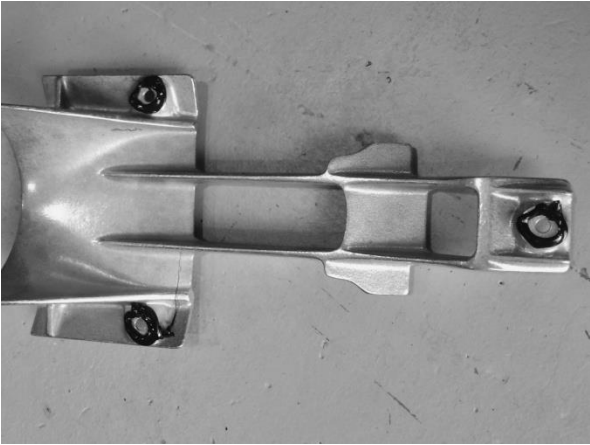
(#2)



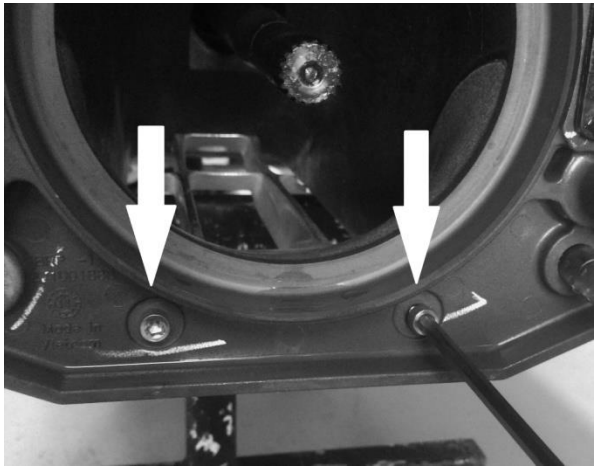
(#3)



(#4)



(#5)



(#6)

