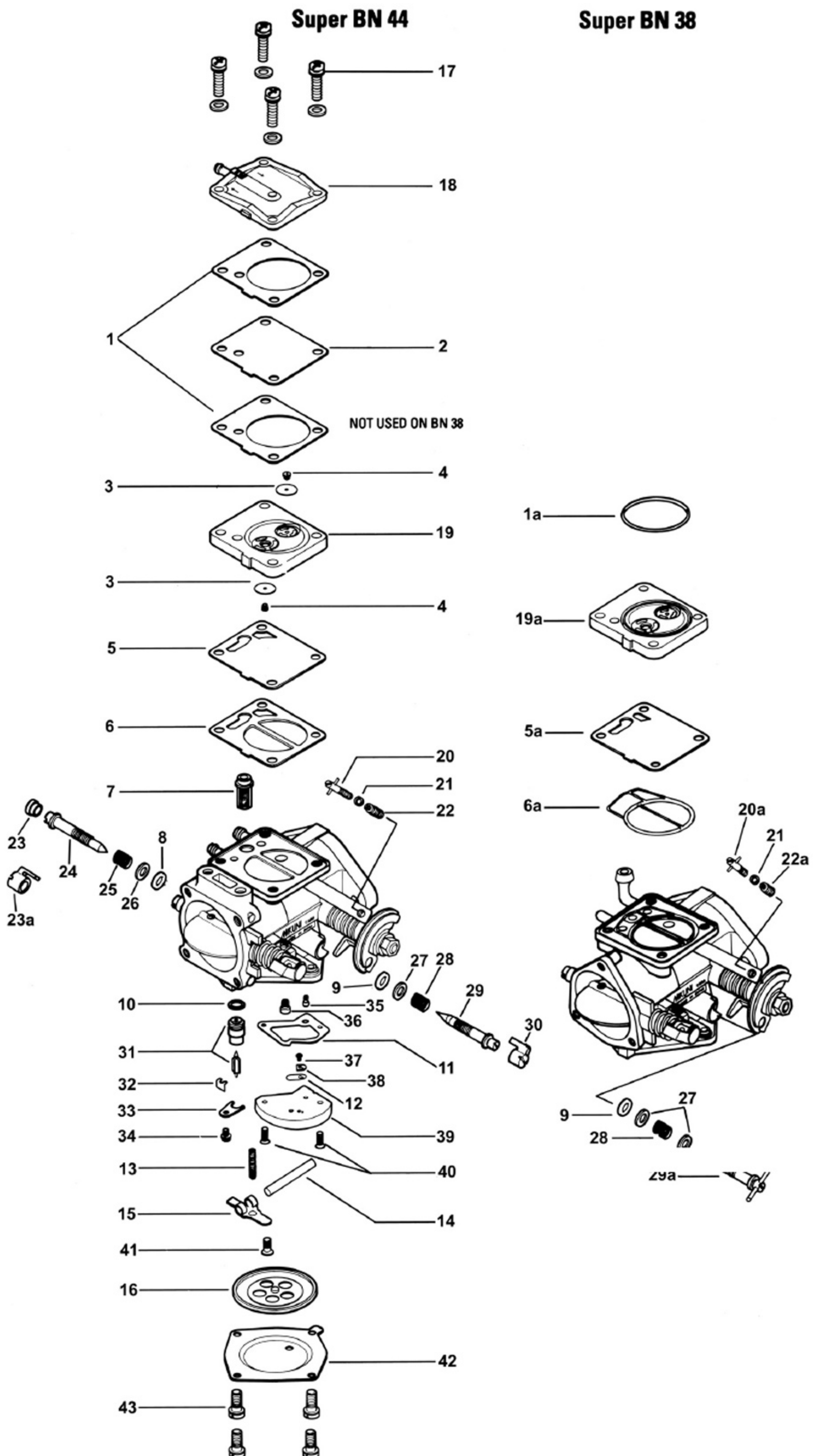


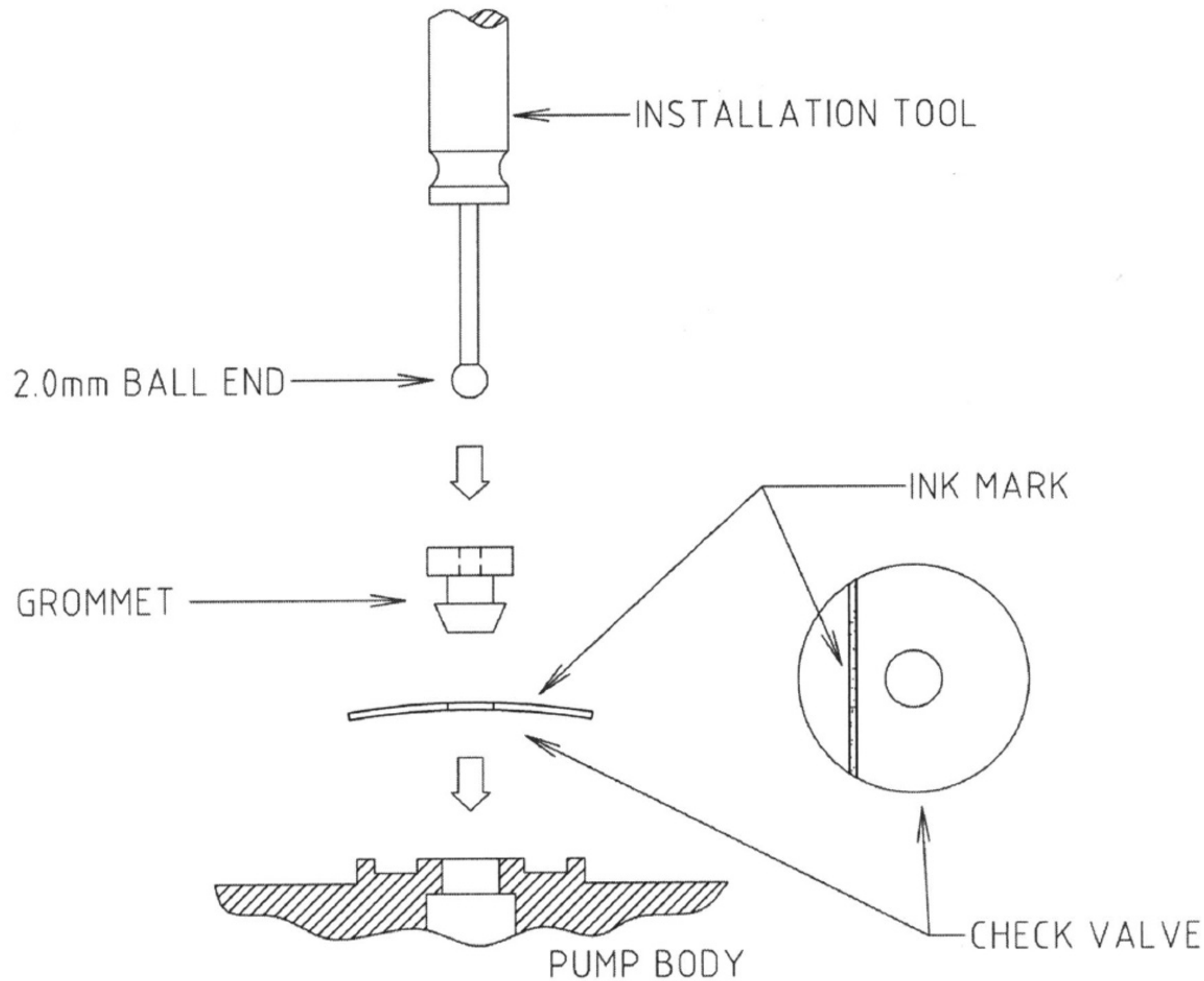
**Fits: Mikuni Super BN38 & 44 (Square Pump)
Yamaha Water Vehicle with Super BN44
Sea-Doo with Super BN38**

No.	Part No.	Description
1.	BN38/547	Gasket, Pump (2)
1a.	616-72001*	O-Ring
2.	BN34/97	Diaphragm, Pump (Clear)
3.	BN34/124	Check valve (Clear) (2)
4.	BN34/125	Grommet, Check Valve (2)
5.	BN34/100**	Diaphragm, Damper
5a.	BN34/129*	Diaphragm, Damper
6.	BN38/101**	Gasket, Damper
6a.	616-92007*	O-Ring
7.	BN44/146	Filter
8.	B30/305	O-Ring, Hi Speed
9.	MD12/16	O-Ring, Low Speed
10.	KV/10	O-Ring, Needle Valve
11.	BN34/123	Gasket, Valve Body
12.	BN34/107	Check Valve (Clear)
13.	730-03027	Spring, Arm (115 grams)
13a.	730-03030	Spring, Arm (65 grams)
14.	VM30/97	Pin, Arm
15.	BN38/534	Arm (Stainless)
16.	BN44/145	Diaphragm Assembly
(Items 17-43 for Reference Only, NOT Included in Kit)		
17.	BN34/120-30	Screw with 2 Washers Stainless-30mm (4)
18.	BN34/95B	Cover, Pump
19.	BN34/98**	Body Assembly, Pump
19a.	BN34/128*	Body Assembly, Pump
20.	BN44/109**	Stop Screw, Idle
20a.	BN34/82*	Stop Screw, Idle
21.	BN38/39	Washer (Aluminum)
22.	BN38/341**	Spring, Idle
22a.	BN38/344*	Spring, Idle
23.	B26/03**	Cap
23a.	BN44/118*	Cap with Tab
24.	604-25017	Adjuster, Hi Speed
25.	BN38/344	Spring, Hi Speed
26.	BN38/39	Washer, Hi Speed (Aluminum)
27.	BN38/172	Washer, Low Speed (Aluminum)
28.	BN38/343	Spring, Low Speed
29.	604-26008**	Adjuster, Low Speed
29a.	BN38/477*	Adjuster, Low Speed (with Cross Bar)
30.	BN44/118	Cap
31.	786-35015-size	Needle Valve Assembly (Viton)
32.	VM15/285	Spring Clip, Needle Valve
33.	BN34/117-GG	Plate, Needle Valve Retainer
34.	CW2-0307-G	Screw with Washer
35.	N100606-size	Jet, Low Speed
36.	N102221-size	Jet, Hi Speed
37.	BV15/121-05-GG	Screw
38.	BN34/108-GG	Plate, Valve
39.	BN44/165	Valve Body Assembly
40.	C5-0414-G	Screw (2)
41.	C6-0308-G	Screw
42.	BN44/147	Cover (Stainless)
43.	MCWS-0512	Screw with Washer (Stainless)(4)



NOTE:
Parts marked w/ single asterisk (*) fit BN38 only.
Parts marked w/ double asterisk (**) fit BN44 only.

INSTRUCTIONS FOR INSTALLING CHECK VALVES



PROCEDURE:

1. The check valves must be installed as shown with the concave side towards the pump body. Failure to do so may result in improper sealing by the check valves. The check valves are supplied by the maker in rolls.....this results in the check valves having a permanent 'curl'. If the curl is not readily discernible, there is also a ink mark on each check valve. The side having the ink mark is the side away from the pump body.
2. The use of an installation tool (not included in this kit) will facilitate installation of the grommet. Apply oil to the tip of the grommet, insert tool end into hole in head of grommet, and push in until grommet is properly seated. Repeat above procedure for the other check valve.