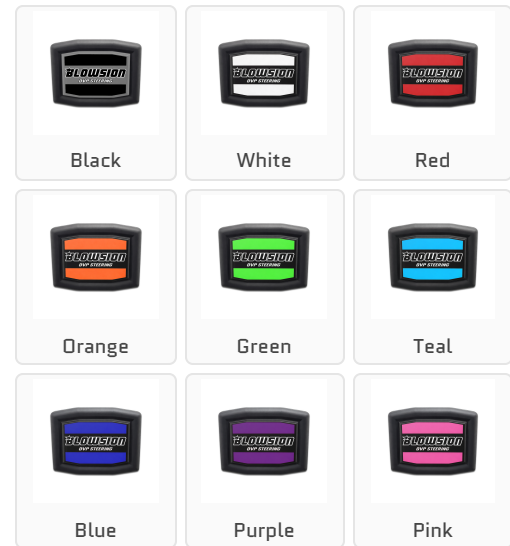


BLOWSION STEERING BAR PAD

AVAILABLE IN 9 COLORS



WHAT'S INCLUDED



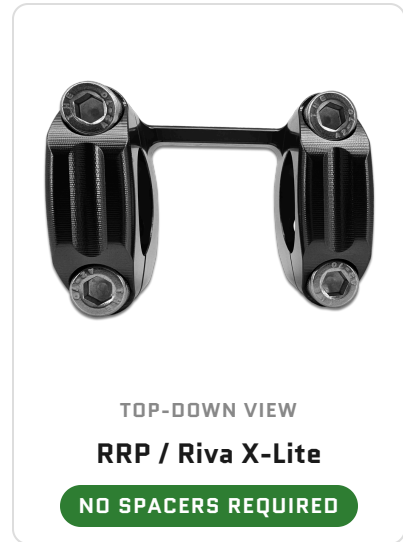
- [1] Blowsion Steering Bar Pad
- [1] Thick spacer
- [1] Thin spacer

COMPATIBILITY

- Blowsion OVP on Blowsion Handlepole
- Blowsion Universal OVP on stock Yamaha poles including 2021+ Superjet.
- Blowsion Universal OVP on RRP pole.
- RRP X-Lite steering on RRP Handepole.
- RRP X-Lite Steering on Stock Yamaha poles Including 2021+ Superjet.
- KP steering systems on KP pole and possibly KP steering on OEM pole but that will need confirmation.
- Possible to fit other steering systems with 50.8mm to 56mm handlebar clamp spacing

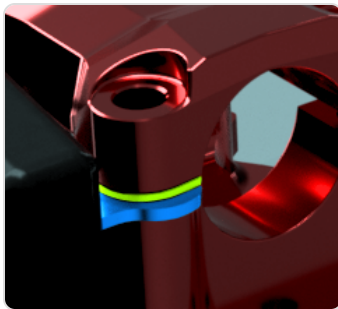
STEERING SYSTEM SPACER REQUIREMENTS



Look down at your handlebar clamp and match it to one of the three styles below. Use the indicated spacers during installation.



INSTALLATION

1 Identify required spacers based on your steering system [see Spacer Requirements above]. Set unused spacers aside.



-  Spacer[s]
-  Bar pad mounting tabs

2 Position the bar pad and spacers under the top bar clamp. The spacers [green] sit between the clamp and the pad's mounting tabs [blue]. Stack any required spacers, then start the four clamp bolts by hand to keep everything aligned.

3 Torque the rear [spacer-side] bolts first to 14 ft-lbs, then torque the front handlebar clamp

bolts to **14 ft-lbs.**

Torque spec: 14 ft-lbs. Rear bolts first, then front. Do not over-tighten.

4 Verify fitment. Confirm the pad sits flush with no gaps and the steering moves freely lock-to-lock with no interference. Re-check torque after the first ride.



Installation questions? Contact your dealer or Blowsion support.

ADDRESS

Blowsion LLC
13921 SW Industry Lane, Suite 120
Sherwood, Oregon 97140 · USA

BUSINESS HOURS

9:00am – 5:00pm PST
Monday – Friday

CONTACT

Phone: 503-625-3616
Email: info@blowsion.com
Web: blowsion.com